

Migrating to Ffenics from DataEase.

Database City provides a migration tool, FFMIGRATE, that will move some DataEase applications to Ffenics.

FFMIGRATE can convert DataEase versions as follows:

DataEase version 6 and 7.0 applications should migrate with little difficulty, subject to removing some features that are not supported by Ffenics. DataEase 7.1 and later applications cannot be fully migrated.

DFW version 5.x applications should migrate, but some forms and scripts may need extra adjustment to enable them to work as expected.

DFD version 5.x. Complete applications cannot be migrated, but Forms and form logic (derivations and range checks), data, relationships and users can be brought in, but not reports or DQL's or menus.

Other DataEase versions cannot be migrated.

DFD Migrate to Ffenics

DFD 5.x Only

In the case of DFD, you will have to add reports and procedures etc., to make your application fully functional. We strongly suggest that you make yourself thoroughly familiar with Ffenics before attempting to migrate a DFD application. There are numerous new features in Ffenics that you will likely want to use to enhance your application. Additionally the workflow in a Windows application will likely need to be very different from a DOS application. For example, Ffenics uses Windows MDI technology (as used by Word and Excel) which allows multiple unrelated documents within the application window to be open and in use simultaneously.

Important Notes to DOS Users

- Ffenics itself is **not** inter-operable, or compatible, in any way with any version of DataEase. You can only exchange data with DataEase systems via the OLEDB Provider supplied with DataEase, or by import/export routines, or via third party data sources. There is no OLEDB provider for Ffenics.
- The Migration Tool performs a limited migration from DOS. It will convert Tables, with their data (and their range checks and derivations) to Ffenics Form Documents. It will also bring across Relationships and Users. But it will **not** bring across any views, reports (including DQL procedures), Menus, or DOS related information such as printer setups, system masks, locations, etc., Put simply, it brings across all the basic database elements but none of the application components.

- While the migration tool does not migrate DQL's, you can of course cut and paste the text of DQL's from the DOS environment into the Ffenics script editor.

DFW Migrate to Ffenics

Users of DFW 5.x should be aware that the version of DataEase technology that Ffenics is based upon can be thought of as being roughly halfway between DE6.52 and DE7. There are numerous minor differences between versions of DFW which can cause behavior discrepancies if elderly DFW applications are brought directly into Ffenics. If it is not practical to upgrade to DE6.52 first (this is a matter to be taken up with your DataEase supplier, of course) then be doubly sure to check your migrated application's functionality is what you expect.

DataEase 6.x Migrate to Ffenics

Migration is automatically carried out by the tool and normally little manual work is required. But you should still be sure to check functionality, as there are many differences between the products and we do not claim to be backward compatible. If something does not work, often re-saving the offending document or object is all that is required.

DataEase 7.0 Migrate to Ffenics

Migration is automatically carried out by the tool and normally little manual work is required. But you should still be sure to check functionality, as there are many differences between the products and we do not claim to be backward compatible. Note that De7.1 and later versions cannot be fully migrated.

Migration of applications in other languages.

Currently only an English language version of Ffenics is available. Furthermore, as Ffenics uses the ANSI character set and DataEase (other than v7) uses the ASCII character set, some difficulty may be experienced with accented characters etc, although translation of such characters is attempted in the data. A possible solution is to change such characters to unused ones in the lower part of the ASCII character set before migration, and then convert them to the appropriate character in the ANSI set after.

Pre-Migration Tasks

Before using the Ffenics Migration tool, you should perform the following tasks.

All Migrators

1. Make a copy of the application which you wish to migrate. **ALL subsequent migration work should be carried out on this copy.** Should the migration process run into delays, or problems, you can carry on using your live copy of the application without trouble.
2. Check the Date Format of your application. Make sure that it matches your Windows Date Format, otherwise you may import your DD/MM/YY data into a MM/DD/YY field – which could lead to confusion.
3. Make sure you do not have any of the elements marked with an * in the 'differences' document in your application (it is not likely that you will, however).

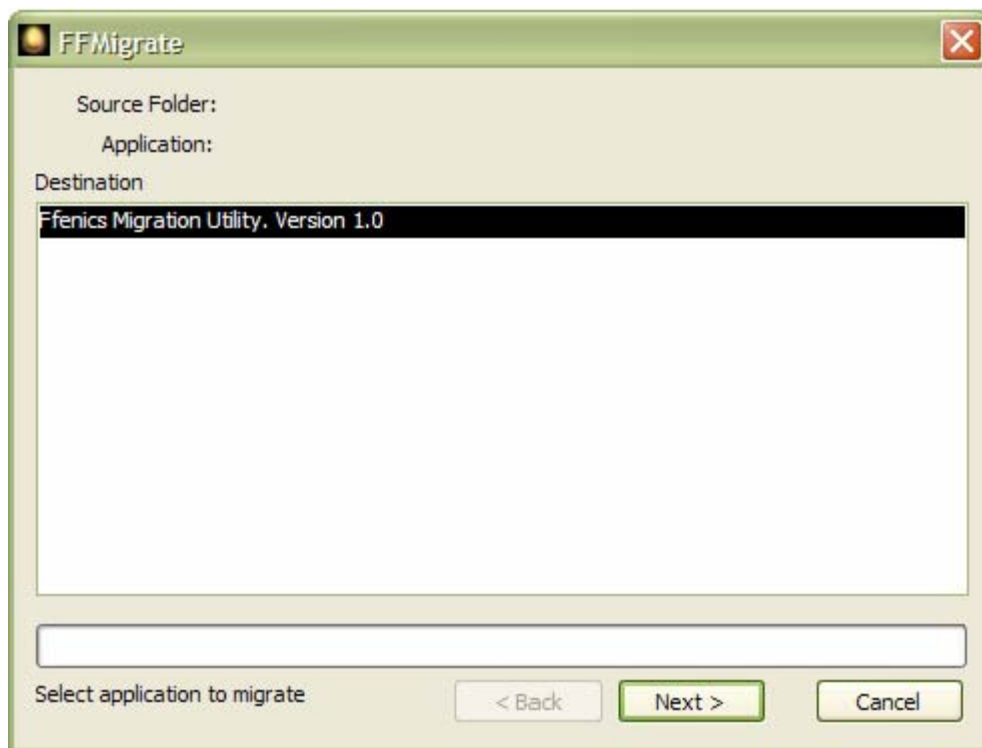
DOS Migrators

1. You have the option to convert your Long:text fields into Memo fields. This is suitable if you use your long:text field for memos or comments - it is **not** suitable if you process your long:text fields in DQL.
2. DOS Menus are not migrated to Ffenics – so check to ensure that you have a high level user who is **not** assigned a custom startup menu. Otherwise you won't be able to get into the migrated application as a high level user. If necessary, create a new high level user in DataEase DOS to whom no startup menu has been assigned

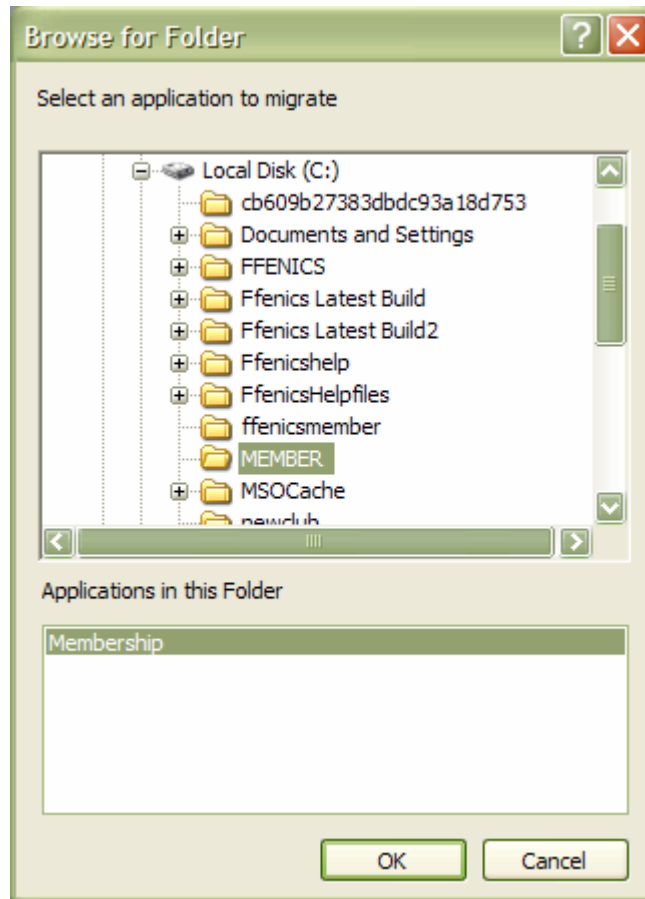
The Migration Process

When you have carried out your pre-migration check list, you are ready to migrate your application

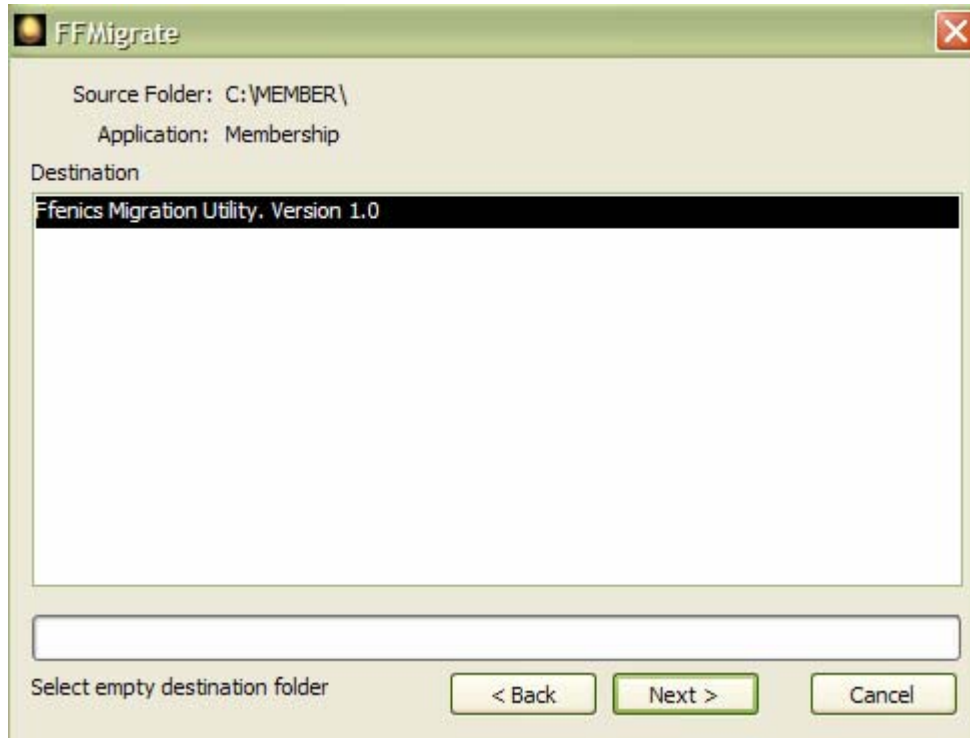
1. First of all, run the FFMigrate.exe file which you downloaded from the Ffenics website along with this document.



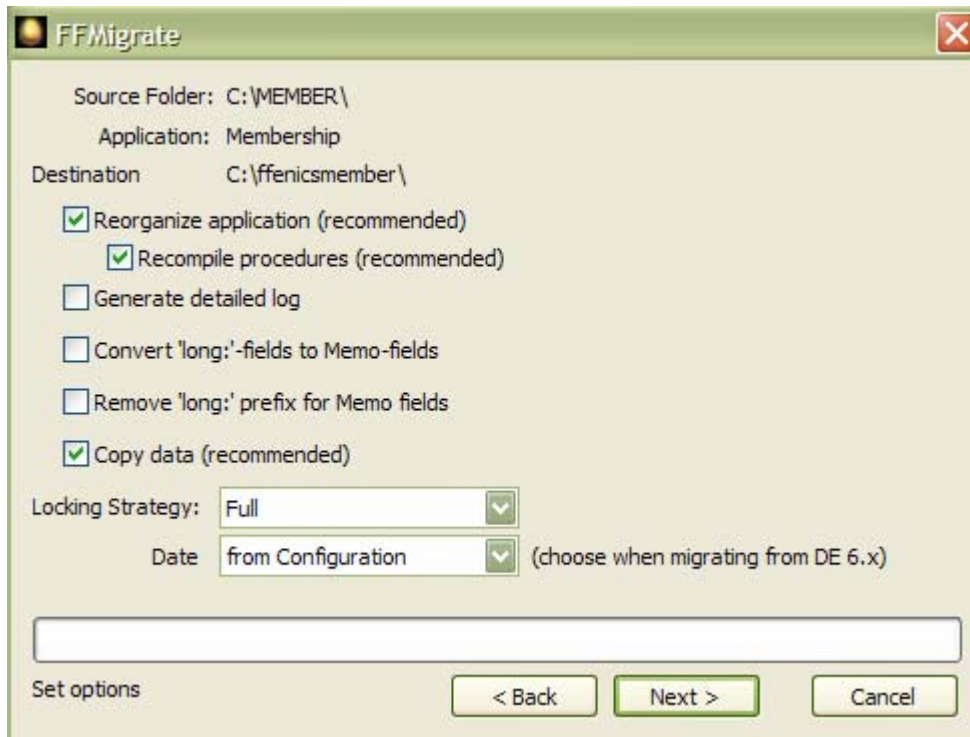
2. This is just an information screen, warning you that you are about to run FFMigrate. Click the **next** button and you'll receive a Directory Listing, as shown below.



3. Navigate to your **source** application, highlight it, then click the **OK** button. In the example above we have just selected the Member application to be migrated. When you click OK, another warning screen will be displayed, as shown below.



4. This warning screen is informing you that you are about to select the **Target** directory - which must be completely empty - that will hold your migrated application. Click the **next** button, and you will be shown the main Migration Options screen, as shown below.



The options from this screen are described below:

Reorganize Application:

Check this to reorganize records as they are migrated. This removes the 'dead wood' of deleted records. It also performs some checks on the migrated items. This box **must** be checked to achieve a successful migration so you should leave it checked unless you are only running the migration to see your progress on eliminating errors.

Recompile Procedures:

Check this to recompile procedures as they are migrated. This checks that all procedures are valid in the new application, This should always be checked unless you use DFWACTS - see below.

DFWACTS users: If you use the DFWACTS CDF's and wish to continue using them after the migration (as opposed to using the versions built in to Ffenics), do not use this option. Make sure you have the DFWACTS library correctly registered in the ELF Form in the migrated app in Ffenics before recompiling any procedures. After installing DFWACTS, and making sure you only have the one application in the directory, do a final clean compile of everything from the command line by typing `Ffenics /m1 /1` Alternatively, check the recompile box, and if testing shows any problems THEN install DFWACTS and do the recompile with the command line options shown - Ffenics will always use any ELF's before internal functions, so this would revert to use of the 'old' DFWACTS library. **Note** that if you are migrating from DE7 you should use the `/r1 /1` command line instead.

Generate Detailed Log:

Check this to receive a detailed (rather than a summary) Migration Log. Normally it is best to check this. It is quite likely the first attempt at migration will throw some errors, and the log will assist you in rectifying these before you try again.

Convert Long: Text fields to Memo Fields.

Check this to convert DFD Long:Text fields into New Ffenics Memo fields. Check this only if you know you do not want to process the contents of the memo fields and would like the larger size etc. that they offer over long:text.

Remove Long Prefix for Memo fields.

DFD Long:Text fields have the prefix "Long" in front of the field name. If you're going to convert them to Memo fields, then it makes sense to remove this prefix. Even if you keep them as long:text fields the 'long:' prefix is not required in Ffenics, but this option only works if you convert to Memo fields.

NOTE: Memo fields: Memo fields are intended for use as comments, like paste it notes or indeed memos. They are not really considered part of the applications' 'true' data, and you should always use the LongText Ffenics field type if you wish to process the contents of the field. Advantages of Memo fields are that they can hold more text than a LongText field, and are simpler to handle.

Copy Data

Check this box and your data files will be copied into the new application. Leave it unchecked and the data is left behind. This lets you trial the migration application before moving your data into it – moving the data can be time consuming in a large application containing many thousands of records. However, you should do at least one trial migration with data before doing the final move, as more errors may be produced.

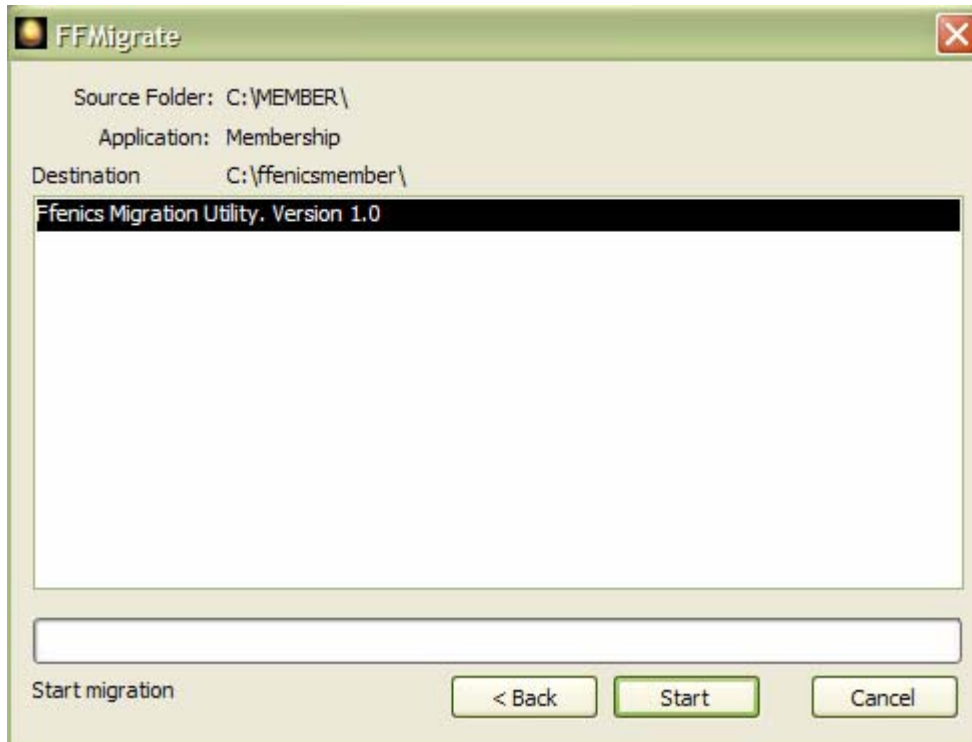
Locking Strategy

This will select the Locking Strategy which your new Ffenics application will use. Options are **Full**, **Basic**, **Opportunistic** and **Single User**. Check the Ffenics Help for a full description of these locking strategies.

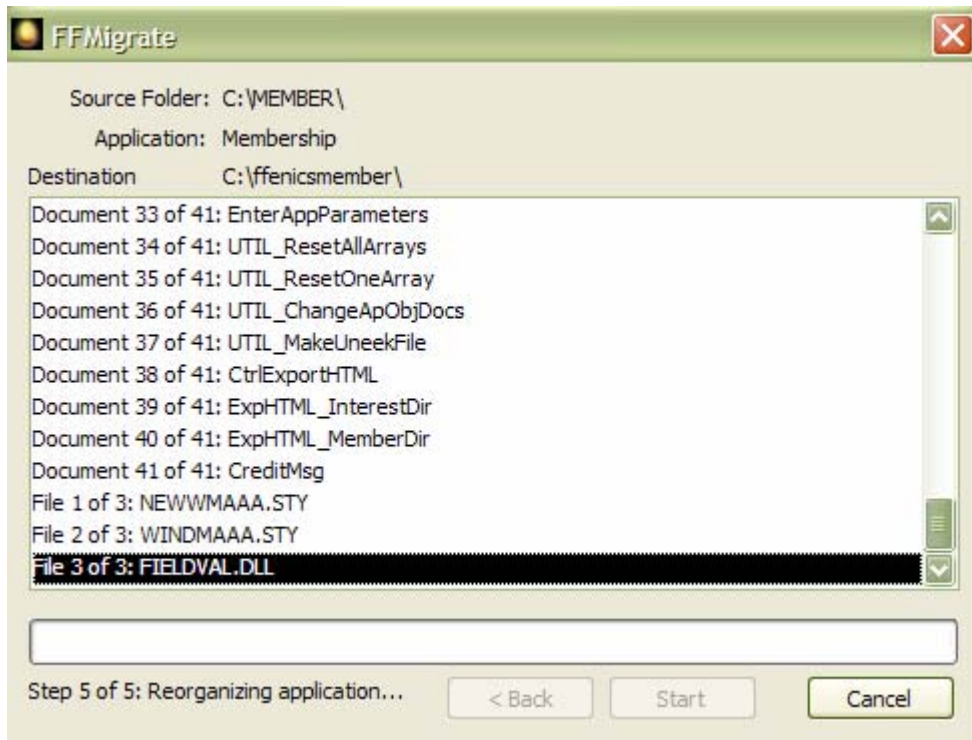
Date Standard

Defines the type of date format (DD/MM/YY, MM/DD/YY, etc) which the new application will default to. Make sure that you pick the date format which matches your source application! Otherwise the date fields in your migrated application will contain confused data!

5. Select your chosen options, then click the **next** button. An information screen is displayed, as shown below. Make a final check that the details are correct, and then click the **next** button – which will start the migration process.



6. As the migration proceeds, a Migration Log dialog box is displayed on screen, showing you how the migration is getting along. An example is shown below.



7. When the migration finishes, the dialog box is left open on screen. If there are any errors or warning messages, you can review them one-by-one by clicking the **next** button. When you have finished reviewing the Migration Log, exit the dialog box.

The Migration Log is kept in a file called FFMigrate.log, found in the same directory as your newly migrated application – so you can refer to it as often as needed.

Post Migration Tasks

Tasks for All Migrations

1. Your first task is to examine the FFMigrate.log file (in the new application directory), to see if any errors occurred during the migration. The Log will consist mainly of a list of Forms which have been converted, along with some informational messages such as;

```
C:\Program Files\DataEase Apps\club\PRICCAAD.TDF written.  
  Converting PRICCAAD.DBM...  
  500 record(s) read.  
  500 record(s) and 7000 bytes written to C:\Program Files\Ffenics  
  \club\PRICCAAD.DBM.
```

IMPORTANT: Make sure that both phases of the migration ran - you should, at the end of the log, have evidence of both forms being re-organized and usually new forms being created. If phase 2 of the migration did not run, you will still be able to log on to the application, but important changes will not have been made and the application will not work as expected.

If errors were encountered during phase 1, the second phase will not run and you will receive an error message. You will also receive an error message if you unselect the 'Reorganize Application' box or you have decided to break out of the process. In all these cases the migration is incomplete and the migrated application should not be used.

You must deal with all error messages before you have a successful migration, You may receive warning messages, such as the two examples shown below:

```
WARNING: SAMPCA AAA.TDF is not Tagged file.
```

Tagged Files. Depending on which version of DE originally produced a Table, it may be 'tagged' or not – the tagged label just determines the internal DE record pointer routines. Older files may not be tagged, and will generate a warning message, similar to the one shown below:

During the migration, 'untagged' files will be updated to the modern tagged format. The warning message is informational only, and can safely be ignored.

```
WARNING: Wrong date 081595.
```

If the date format in your source application does not match the date format in your new Ffenics application, then you'll probably see a lot of these messages. Rather than trying to massage the data, the quickest way of correcting this is to re-migrate, having corrected the date format.

2. **Owning Forms.** If the migration process finds a table **without** an owning form, then it will create a simple field per line form to own it. Ffenics does not allow tables to exist by themselves. This means that all DFD tables (which don't have a **windows** format owning form) will automatically receive a field-per-line layout in a Form Document. For DOS migrations, turning these simple layouts into attractive screens is one of their tasks.

3. **Testing.** Carry out a thorough test of your application, before going 'live' with it. The Ffenics migration tool carries out most of the migration work for you – but it can **not** guarantee that a migrated application works in exactly the same way as the original application. Again, we emphasize that Ffenics is a new product and as such is not guaranteed to be functionally compatible with any DataEase version. Some items may need to be given a trivial modification and saved again in Ffenics for the Ffenics changes to 'take' - this is particularly true of DQL Exports and MultiBoxes.

